

Report of North East Divisional Community Safety Partnership

Report to Outer North East Area Committee

Date: 8th July 2013

Subject: North East Divisional Community Safety Partnership Annual Report

Are specific electoral Wards affected?	<input checked="" type="checkbox"/> Yes	<input type="checkbox"/> No
If relevant, name(s) of Ward(s): Wetherby Harewood Alwoodley		
Are there implications for equality and diversity and cohesion and integration?	<input type="checkbox"/> Yes	<input checked="" type="checkbox"/> No
Is the decision eligible for Call-In?	<input type="checkbox"/> Yes	<input checked="" type="checkbox"/> No
Does the report contain confidential or exempt information?	<input type="checkbox"/> Yes	<input checked="" type="checkbox"/> No
If relevant, Access to Information Procedure Rule number: Appendix number:		

Summary of main issues

1. To update ward members of the overall performance of the North East Divisional Community Safety Partnership and Neighbourhood Policing Teams for 2012/13.
2. To provide an overview of the work undertaken by the partnership within the locality to reduce crime and disorder.

Recommendations

3. The Area Committee is asked to note the contents of this report of the North East Divisional Community Safety Partnership.
4. Members are asked to continue supporting the Divisional Community Safety Partnership in relation to prioritising the new Safer Leeds Priorities and tackling Burglary Dwelling during 2013/14 through partnership work at neighbourhood level.

1. Purpose of this report

The report will focus on the following key issues:

- Update members on progress and outputs of the neighbourhood management tasking arrangements
- Report on thematic sub groups and activities
- Report on the performance of the North East Police Division and partnership
- Summary of ward crime statistics, public confidence and user satisfaction
- Report on multi agency 'Operation Champions'
- Report on agreed community initiatives funded via Proceeds of Crime confiscations (POCA)

2. Background information

- 2.1 This report provides Members of the Area Committee with an overview of the performance of the North East Divisional Community Safety Partnership and ward based Neighbourhood Policing Teams. It will also include details of the key initiatives that have been delivered in local communities to reduce crime and disorder. The report focuses upon the period 1st April 2012 to 31st March 2013.

3. Main issues

3.1 Performance Framework

- 3.2 The Divisional Community Safety Partnership (DCSP) will continue to develop activity and management performance against strategic outcomes of the city, defined by The Safer and Stronger Communities Board Partnership plan 2011-2015 which will focus on delivering the following strategic priorities:
- Reducing crime levels and its impact across Leeds
 - Effectively Tackle and Reduce Anti-social behaviour in our Communities

3.3 Safer Leeds has six key priorities for 2013/14

- Reducing burglary and anti-social behaviour
- Tackling domestic abuse
- Reducing re offending
- Improving our understanding of child sexual exploitation
- Dealing with dangerous 'Legal Highs' and cannabis
- Strengthening community engagement and support to victims

- 3.4 Attached is an updated structure chart for the North East Divisional Community Safety Partnership (see Appendix A) with details of the relevant lead officers. The structure is continuously reviewed to ensure delivery against new priorities.

4. Operation Champion

- 4.1 A number of 'multi agency operation days of action' have been carried out across the ward during 2012/13 and have been based around themes and deployed into areas of concern. We will continue to deliver operations during 2013/14 with a minimum requirement of four operations per year per Neighbourhood policing team.

5. Operation Outwork

- 5.1 As the scrap metal market maintains its consistently high prices the theft of metal continues to be a problem across the North East Leeds Policing area. Whether it is cable theft, burglary other, general theft non specifics or full blown burglary dwellings the target is often metal in order for the criminals to cash in.
- 5.2 Joint partnership operations between Neighbourhood Policing Teams and the Environmental Locality Team were delivered on a monthly basis and will continue through 2013. These operations include setting up road checks and routine stopping of waste carrier vehicles in order to complete checks on such vehicles. Police staff conduct normal police checks on all passengers and pay attention to the condition of such vehicles alongside East North East Environmental Locality team staff that provide trained expertise regarding waste carrier licence/rules and conditions.

6. POCA

- 6.1 The North East Division allocated a further £29,000 and carried forward £9187.85 from 11/12 totalling £38,197.85 funding confiscated from criminals under the Proceeds of Crime Act to the Divisional Community Safety Partnership during 2012/13 to support local groups with community projects/activities. In total, across the whole division, we approved and funded 123 applications and spent £33,243. We continue to receive positive feedback from the community. Information regarding the awards continues to be advertised in the Neighbourhood Management / Neighbourhood Policing Team newsletters and on the police Neighbourhood Policing Team websites. We will be continuing the scheme into 2013/14 (Appendix C) provides a summary of projects funded in the Outer North East Area).

7. Confidence and Satisfaction

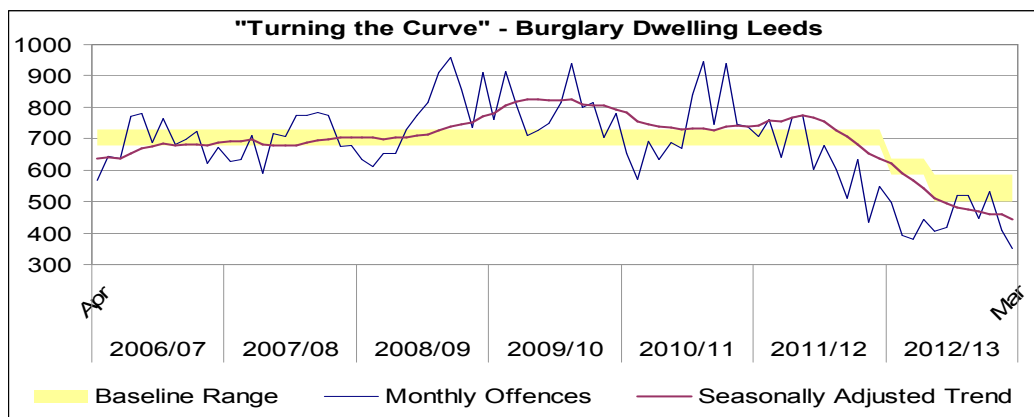
- 7.1 North East Leeds continues to have the highest public confidence in local policing during 2012/13 at 60.5% (March 2013) compared with the West Yorkshire force average of 53.9%.
- 7.2 Operation Confidence continued during 2012/13 with two editions and is a contributing factor to the high rates of public confidence. The North East Division produces 11 neighbourhood management newsletters detailing partnership activity around crime and grime within the Neighbourhood Policing Team and delivers to approximately 128,000 households. The initiative has been funded by North East Police Division, East North East Homes, Safer Leeds Partnership and Aire Valley Homes, we are

anticipating securing funding for 2013/14 for a further two editions whilst investigating other options alongside social media such as Facebook and Twitter to improve engagement with local communities.

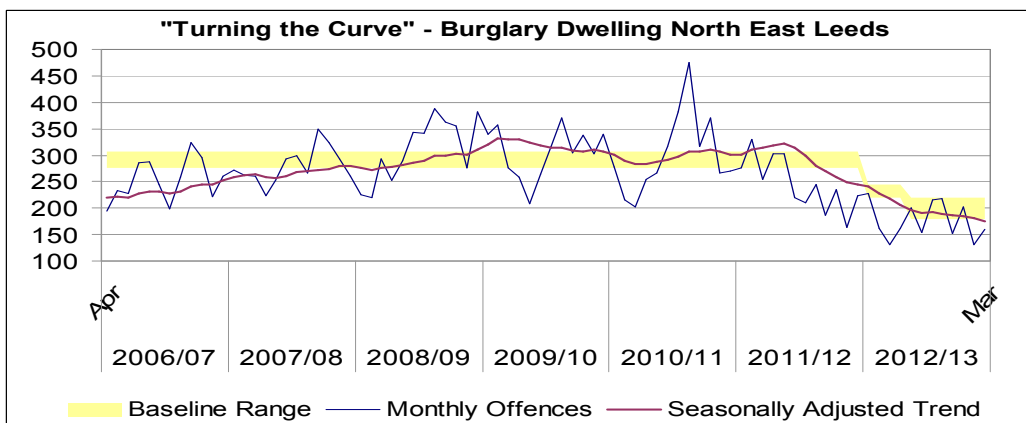
8. Burglary Dwelling

8.1 Burglary Dwelling remains a key priority in relation to allocation of resources both staffing and financial. Tackling burglary dwelling remains the key priority within the division and across the whole of Leeds, we are working closely with Safer Leeds Strategic Burglary Group and partner agencies to maximise opportunities for closer working, sharing good practise and continue to deliver initiatives at a local neighbourhood level.

8.2 Overall a very successful year in 2012/13 there were 5,305 recorded domestic burglaries in Leeds, down 30.8% when compared with the previous year equivalent to 2357 fewer victims.



8.3 Overall year to date burglary offences for North East Leeds are down 28.35 % on the same period last year (833 less offences).



9. Ward Risk Matrix

- 9.1 During 2012/13 there were nine strategic localities of concern across Leeds. The Outer North East area committee area had no localities of concern, the strategic burglary group are currently reviewing best practise in relation to partnership work and reviewing the localities of concern for 2013/14. The Alwoodley ward has seen a reduction in burglary dwelling however slight increases have been seen in both Harewood and Wetherby Wards during 2012/13.

Ward	Apr-12	May-12	Jun-12	Jul-12	Aug-12	Sep-12	Oct-12	Nov-12	Dec-12	Jan-13	Feb-13	Mar-13	12 Month Total	12 Month % Change	3 Month Change	Colour Key
Hyde Park & Woodhouse	Very High Concern	High Concern	High Concern	High Concern	High Concern	High Concern	High Concern	High Concern	High Concern	High Concern	High Concern	High Concern	328	-45.1%	-43.7%	Very High Concern High Concern Some Concern Low Concern Strategic Area
Burmantofts & Richmond Hill	Very High Concern	High Concern	High Concern	High Concern	High Concern	High Concern	High Concern	High Concern	High Concern	High Concern	High Concern	High Concern	289	-29.0%	-31.1%	
Gipton & Harehills	Very High Concern	High Concern	High Concern	High Concern	High Concern	High Concern	High Concern	High Concern	High Concern	High Concern	High Concern	High Concern	280	-26.9%	-1.4%	
Armley	High Concern	High Concern	High Concern	High Concern	High Concern	High Concern	High Concern	High Concern	High Concern	High Concern	High Concern	High Concern	252	-35.4%	-13.8%	
Headingley	High Concern	High Concern	High Concern	High Concern	High Concern	High Concern	High Concern	High Concern	High Concern	High Concern	High Concern	High Concern	230	-43.5%	-61.4%	
Roundhay	High Concern	High Concern	High Concern	High Concern	High Concern	High Concern	High Concern	High Concern	High Concern	High Concern	High Concern	High Concern	225	0.0%	-20.3%	
Killingbeck & Seacroft	High Concern	High Concern	High Concern	High Concern	High Concern	High Concern	High Concern	High Concern	High Concern	High Concern	High Concern	High Concern	221	-38.8%	-8.8%	
Middleton Park	High Concern	High Concern	High Concern	High Concern	High Concern	High Concern	High Concern	High Concern	High Concern	High Concern	High Concern	High Concern	215	11.4%	-21.0%	
Beeston & Holbeck	High Concern	High Concern	High Concern	High Concern	High Concern	High Concern	High Concern	High Concern	High Concern	High Concern	High Concern	High Concern	205	-3.3%	-22.2%	
Kirkstall	High Concern	High Concern	High Concern	High Concern	High Concern	High Concern	High Concern	High Concern	High Concern	High Concern	High Concern	High Concern	203	-43.3%	52.3%	
Cross Gates & Whinmoor	High Concern	High Concern	High Concern	High Concern	High Concern	High Concern	High Concern	High Concern	High Concern	High Concern	High Concern	High Concern	182	-38.9%	-10.0%	
Weetwood	High Concern	High Concern	High Concern	High Concern	High Concern	High Concern	High Concern	High Concern	High Concern	High Concern	High Concern	High Concern	182	-25.7%	7.5%	
Bramley & Stanningley	High Concern	High Concern	High Concern	High Concern	High Concern	High Concern	High Concern	High Concern	High Concern	High Concern	High Concern	High Concern	181	-56.9%	122.9%	
Temple Newsam	High Concern	High Concern	High Concern	High Concern	High Concern	High Concern	High Concern	High Concern	High Concern	High Concern	High Concern	High Concern	179	-27.8%	-20.3%	
Farnley & Wortley	High Concern	High Concern	High Concern	High Concern	High Concern	High Concern	High Concern	High Concern	High Concern	High Concern	High Concern	High Concern	175	-39.7%	-23.3%	
City & Hunslet	High Concern	High Concern	High Concern	High Concern	High Concern	High Concern	High Concern	High Concern	High Concern	High Concern	High Concern	High Concern	170	-17.5%	2.2%	
Pudsey	High Concern	High Concern	High Concern	High Concern	High Concern	High Concern	High Concern	High Concern	High Concern	High Concern	High Concern	High Concern	170	-30.6%	7.3%	
Calverley & Farsley	High Concern	High Concern	High Concern	High Concern	High Concern	High Concern	High Concern	High Concern	High Concern	High Concern	High Concern	High Concern	167	-32.1%	-35.0%	
Chapel Allerton	High Concern	High Concern	High Concern	High Concern	High Concern	High Concern	High Concern	High Concern	High Concern	High Concern	High Concern	High Concern	164	-46.9%	-18.8%	
Moortown	High Concern	High Concern	High Concern	High Concern	High Concern	High Concern	High Concern	High Concern	High Concern	High Concern	High Concern	High Concern	154	-35.3%	-50.0%	
Alwoodley	High Concern	High Concern	High Concern	High Concern	High Concern	High Concern	High Concern	High Concern	High Concern	High Concern	High Concern	High Concern	138	-15.3%	-32.4%	
Horsforth	High Concern	High Concern	High Concern	High Concern	High Concern	High Concern	High Concern	High Concern	High Concern	High Concern	High Concern	High Concern	127	-18.6%	-6.1%	
Morley North	High Concern	High Concern	High Concern	High Concern	High Concern	High Concern	High Concern	High Concern	High Concern	High Concern	High Concern	High Concern	121	-14.2%	34.6%	
Adel & Wharfedale	High Concern	High Concern	High Concern	High Concern	High Concern	High Concern	High Concern	High Concern	High Concern	High Concern	High Concern	High Concern	105	-34.8%	10.0%	
Harewood	High Concern	High Concern	High Concern	High Concern	High Concern	High Concern	High Concern	High Concern	High Concern	High Concern	High Concern	High Concern	91	4.6%	26.3%	
Rothwell	High Concern	High Concern	High Concern	High Concern	High Concern	High Concern	High Concern	High Concern	High Concern	High Concern	High Concern	High Concern	88	-11.1%	47.4%	
Morley South	High Concern	High Concern	High Concern	High Concern	High Concern	High Concern	High Concern	High Concern	High Concern	High Concern	High Concern	High Concern	82	-24.8%	-34.4%	
Wetherby	High Concern	High Concern	High Concern	High Concern	High Concern	High Concern	High Concern	High Concern	High Concern	High Concern	High Concern	High Concern	78	6.8%	125.0%	
Otley & Yeadon	High Concern	High Concern	High Concern	High Concern	High Concern	High Concern	High Concern	High Concern	High Concern	High Concern	High Concern	High Concern	69	-20.7%	-42.9%	
Garforth & Swillington	High Concern	High Concern	High Concern	High Concern	High Concern	High Concern	High Concern	High Concern	High Concern	High Concern	High Concern	High Concern	64	-28.9%	83.3%	
Ardsley & Robin Hood	High Concern	High Concern	High Concern	High Concern	High Concern	High Concern	High Concern	High Concern	High Concern	High Concern	High Concern	High Concern	63	-14.9%	-33.3%	
Guiseley & Rawdon	High Concern	High Concern	High Concern	High Concern	High Concern	High Concern	High Concern	High Concern	High Concern	High Concern	High Concern	High Concern	53	-39.1%	7.1%	
Kippax & Methley	High Concern	High Concern	High Concern	High Concern	High Concern	High Concern	High Concern	High Concern	High Concern	High Concern	High Concern	High Concern	50	-35.1%	-9.1%	

10. Most Active / Amber Nominals / Burglary Group

- 10.1 The group continues to meet on a six weekly basis and looks at how best to manage individuals offending behaviour through offering support through targeted services or taking enforcement action. The youth offending service have widened their remit to offer voluntary support to those wishing to engage outside of the criminal justice system. We have developed close working relationships with targeted services and refer into guidance and support structures.

11. Neighbourhood Management Tasking Key Achievements 2012/13

- 11.1 The eleven neighbourhood management tasking teams continue to meet six weekly and are still firmly embedded into agencies day to day business. Members continue to be invited to attend and support meetings.

11.2 This is not an exhaustive list of activities but includes key achievements from each of the neighbourhood management tasking teams within the inner north east area

12. **Wetherby /Harewood**

12.1 **Domestic burglary** - Crime prevention through improved household security including Euro Profile Cylinder locks. A new system was introduced whereby cost effective replacement locks can be sourced by the public through the Wetherby & District Crime Prevention Partnership.

12.2 A number of neighbour disputes have been problem solved working in partnership with the ALMO and Leeds anti-social behavior unit.

12.3 **Op Champion** – (Bushminster week) **Wednesday 5th December** – Number plate screw replacement day. In partnership with B & Q Stores who supplied the equipment which enabled officers to replace number plate fixings with security screws which reduce the chance of having the number plates stolen. Morrison's also assisted in allowing officers to use the car park to carry out the free service. Over 40 local residents took advantage of this initiative.

12.4 **Op Champion Thursday 6th December** – Wetherby Town Hall working with Wetherby & District Crime Prevention Panel, & Avocet locks Ltd, PCSOs assisted in giving out crime prevention advice along with purse lanyards. Throughout the day over 50 people came and viewed the displays as well as making purchases of Crime prevention aids and chatting to officers and Crime panel members.

12.5 **Op Champion Friday 7th December** - Wetherby NPT were joined by Leeds City Council Environmental Enforcement and DVLA to target offenders using the road network. In excess of 100 vehicles were pulled on at the old Red Bus layby on the A58 where fuel tanks were checked for the illegal use of red diesel, waste carriers certificates checked, along with a number of more minor offences ranging from not wearing seat belts to illegal number plates. The team were assisted by local Special Constables. The following outcomes were noted

- 100 plus vehicles / drivers checked
- 4 tickets issued for Waste carriage infringements
- 4 FPT tickets issued for RT offences
- 2 Vehicle defect tickets issued for illegal number plates
- 4 verbal warnings issued for speeding offences.

12.6 **A58 Lay By - Flooding and litter** - Problems were addressed via Environmental Enforcement working closely with Leeds City Councils highways, work included explorations of gullies and culverts, water drained and litter problems addressed.

12.7 **Wattle Syke –Littering problem** - Environmental Services have increased litter picking every Saturday morning which has improved the situation.

- 12.8 **Deepdale Youth Centre.** Effective liaison between youth service staff and police community safety officers. Attendance improved and Youth Services continue to explore suitable provision. Incidents of disorder and youth related anti-social behavior has decreased. This remains an area for continued partnership work.
- 12.9 **A168 – Litter** - Increased litter picking of area resulting in no further reports to LCC.
- 12.10 **Wetherby Jubilee Events** - The North East Leeds Planning & Logistics team worked alongside the Wetherby Jubilee Events Committee, LCC Entertainments Licensing and LCC Traffic Management Department plus a large team of local volunteers to ensure an appropriate level of support was delivered to a series of unprecedented local events. Many of which were policed through the support of an enthusiastic and experienced team of special constables.
- 12.11 **Olympic Torch Relay** - Area Support Team officers worked together with London Olympic Coordination Group to ensure every local school had the opportunity to experience a roadside view of the Olympic Torch being carried through the wards by local torch bearers in a safe and structured event which spotlighted our area.
- 12.12 **Metal Theft, Illegal waste traders and Village Patrols** - A number of small operations were undertaken with East North East Locality Team alongside the Neighbourhood Policing Team (6/3/12, 13/3/12, 23/7/12, 26/9/12 & 7/12/12) to challenge illegal waste carriers/scrap metal collectors throughout the area. This was also intended to raise West Yorkshire police visibility and challenge thefts from gardens and trade vehicles through the villages. This remains a focus for West Yorkshire police , arrests have been made and in a recent case a high value statue has been recovered from a man in Leeds. A successful prosecution of a man from Bramham for a high value case of tyre dumping and environmental damage on a huge scale.
- 12.13 **Town Centre Pick Pockets** - With the aim of reducing overall crime. The Wetherby District Crime Prevention panel and WYP together with W M Morrison Supermarket who sponsored 2 of several lanyard events through this year. The Neighbourhood Policing Team and volunteers worked together to raise public awareness and offer a security device to shoppers in Wetherby.
- 12.14 **Farm Watch** - WYP continues to take the delivery of patrols and bespoke policing to our rural community as a local priority. The Farm Watch meetings continue to be well attended and there is an effective network of appropriate information sharing across both wards. WYP continues to benefit from the sponsored provision of 2 Land Rovers by Ripon Farm Services and Hesco Bastion. The Outer North East Area Committee have granted funding which has covered the fuel cost of these specialist vehicles through 2012 and have recently undertaken to provide similar funding in 2013. Harewood Estates are in the process of providing some additional lighting for one vehicle to improve night time patrols through the farm watch group.

12.15 **Leeds Festival - Multi Agency work** - The event ran from Monday 20/08/12 to Saturday 25/08/12 through that period Wetherby & Harewood NPT delivered the equivalent of 15 Police officer days to support partners. This incorporated PCSO, regulars and special constables. The intention of the operation was to screen vehicles and people who seek to enter the event site in a public facing role, in such a way that we prevent access by unsafe vehicles or persons who may seek to work illegally, profit from unlawful activity or take advantage of vulnerable people. The other participating agencies were; VOSA, UKBA, HMRC - Fuel testing, HM Courts Services, HMRC - Tax and hidden economy team. The staff encountered 224 vehicles and 473 people through a screening process which aimed to reduce crime and enhance public safety. In addition WYP ran speed awareness checks in the surrounding villages and mounted dedicated patrols. 4 people with London addresses were arrested by those patrols in possession of a haul of phones stolen from people at the event.

12.16 **Public Events** - WYP extended support and advice to the planners of 119 notified local public events across both wards making referrals and working in partnership with LCC Highways Management and Entertainment Licensing where appropriate with the intention of delivering reassurance and public safety thereby ensuring public confidence in their local service providers remains high.

12.17 **High Visibility Police Patrols & Licensed Premises Visits - Christmas & New Year** - Supported by specific funding from The Outer North East Area Committee, Wetherby & Harewood Wards, deployed dedicated public reassurance patrols through the town and villages over the weeks prior to the holiday period intended to reduce incidents of alcohol related anti-social behavior and violence through visible uniform foot patrols supported by WYP Mounted Officers and building on links with Wetherby & District Pub Watch and the licensed trade.

13. **Alwoodley**

13.1 **Operation Bellwether** - tackling burglary dwelling and featuring the darker night's initiative. Proactive patrols by police officers in plain clothes and uniform, additional resources including LCC CCTV van, Road Crimes Team, ANPR operations. PCSO patrols, revisits to victims and neighbours, distribution of trembler alarms Work with LASBT and Housing providers to take enforcement action against local offenders

13.2 Crime reduction road shows at retail outlets including Tesco Roundhay Road, Asda Meanwood, and Sainsburys Moor Allerton. Promoting Immobilise the national property register database. Joint work with CASAC in Montagu Crescent offering further target hardening against euro profile burglaries.

13.3 **Operation Bushbrier** – A partnership operation to tackle increase in shed and garage burglaries where pedal cycles stolen. PCSO revisits to crime scenes offering crime prevention advice in conjunction with CASAC. Promoting Immobilise the national

property register database. Crime reduction road show in conjunction with Edinburgh Cycles Chapel Allerton. Purchase of discounted D-locks with support from local councillors small grants which are sold to victims to prevent repeat offences.

13.4 **Operation Bearview** - A partnership approach due to the increase in theft from shops established a Retail Crime Initiative. Specific work with Co-op stores who are reporting disproportionately high levels of crime. Engagement with LASBT and Housing providers to look at joint action against offenders. Work with support agencies especially with regard to drug using offenders

13.5 **Operation Bobby** – On-going partnership work to tackle crime, ASB and drug dealing in the Cranmer Bank, Lingfield and Queenshill estates. A successful covert operation took place around the shops area in the summer of 2012 which led to identification of perpetrators of ASB and resulted in enforcement action against the individuals. In addition funding was identified for CCTV on Cranmer Bank which was joint funded by ENELH and Local Councillors sponsored by Virgin Media

13.6 **Schools parking initiative** – On-going problem solving with schools by PCSO's. Working in conjunction with primary schools. A more recent initiative involved designing new impactive banners to raise awareness and accountability for this issue outside schools. A significant number of primary schools have invested in this initiative.

14. **Hate Crime MARAC**

14.1 The hate Crime Multi-Agency Risk Assessment Conference (HC MARAC) continues to meet monthly. The overall objectives of the group is to:

- Support and assist victims of hate crime in order to protect them and ensure that they are not re-victimised.
- Ensure that effective co-ordinated multi agency enforcement action is taken against perpetrators of hate crime to prevent their re-offending and to ensure successful prosecution outcomes at Court.
- Contribute to the “Hate crime reduction agenda in Leeds”.

14.2 During 2012/13 we have received positive feedback from residents, exits surveys illustrate that they are happy with the response and support they have received from partner agencies.

14.3 Overall the Outer North East area has shown a decrease of 30.4% in recorded hate crimes reported (see chart below)

OUTER NORTH EAST		
Incidents	Change	% Change
30	-7	30.4%

14.4 The chart below illustrates hate crimes by ward:

ALWOODLEY			HAREWOOD			WETHERBY		
Incidents	Change	% Change	Incidents	Change	% Change	Incidents	Change	% Change
19	-2	-9.5%	5	-1	-16.7%	6	-4	-40%

15. Domestic Violence MARAC

15.1 The North East Divisional MARAC continues to meet monthly to develop multi-agency interventions to support victims of domestic violence. Overall a very successful year in relation to reduction of repeat victimisation of cases managed through the MARAC.

16. Leeds Anti-Social Behaviour Team

16.1 LASBT data for 2012/13 has been drawn from on a total of 528 surveys from 1060 named victims (an overall response rate of 50%.

16.2 The charts below outline by ward the number of enquiries received, new cases opened and a summary of the legal outcomes.

LASBT Enquiries Received 2012/13	
Ward	Grand Total
Wetherby	32
Alwoodley	58
Harewood	21

LASBT Legal Outcomes 2012/13				
Ward	Adjourned	Injunction granted	Possession granted	Grand Total
Wetherby	1		1	2
Alwoodley		2		2
Harewood				0

LASBT New Cases Opened 2012/13	
Ward	Grand Total
Wetherby	5
Alwoodley	32
Harewood	4

17. Ward Performance

Outer North East							
Count of URN	Q12 How satisfied are you with the overall service provided by the Leeds ASB Team?						
PersonWardCode_	Very Satisfied	Satisfied	Neither Satisfied Nor Dissatisfied	Dissatisfied	Very Dissatisfied	Grand Total	% 'Satisfied' or 'Very Satisfied'
Alwoodley	7	8	1		1	17	88.2%
Harewood		1				1	100.0%
Wetherby	1	1				2	100.0%
Grand Total	8	10	1		1	20	90.0%

18. Overall Performance of North East Divisional Community Safety Partnership and Ward crime statistics - MARCH 2013 Performance Headlines

- Total Crime across North East Police Division reduced by 10.6% (2,290 less crimes) during 2012/13 compared with the previous year , an improvement on the 7% reduction the previous year
- Overall Year to date offences for burglary dwelling across North East Leeds are down 28.35% on the same period last year. (833 less offences)
- Overall crime across the Outer North East area committee area has reduced 11.0% (273 less crimes)
- Highest confidence rate in local policing across West Yorkshire
- Reduction of overall serious acquisitive crime offences
- Reduced perception of ASB increasing in local areas
- Reduced levels of serious violent crime

19. Crime and ASB 2012/13

- 19.1 Overall a successful year in relation to recorded crime and anti-social behaviour. Across the Inner North East Area Committee there has been an overall reduction of 11.0% (273 fewer recorded crimes)
- 19.2 The below statistics show crime from 1st April 2012 until March 31st 2013 by ward areas compared to the same dates for the previous year.

	Offences	Change	% Change	Offences	Change	% Change	Offences	Change	% Change
Burglary Dwelling	140	-23	-14.1%	85	-2	-2.3%	78	6	8.3%
Burglary Elsewhere	70	-12	-14.6%	82	-44	-34.9%	91	-11	-10.8%
Criminal Damage	154	19	14.1%	54	-11	-16.9%	108	-37	-25.5%
Drugs Offences	43	4	10.3%	24	0	0.0%	25	-17	-40.5%
Fraud & Forgery	43	12	38.7%	9	4	80.0%	26	16	160.0%
Handling	0	-2	-100.0%	1	1	~	2	2	~
Other Crime	16	1	6.7%	5	-1	-16.7%	27	9	50.0%
Other Theft	273	56	25.8%	111	-34	-23.4%	202	-127	-38.6%
Robbery	16	7	77.8%	1	-2	-66.7%	0	-2	-100.0%
Sexual Offences	21	13	162.5%	8	3	60.0%	13	2	18.2%
Theft from Motor Vehicle	67	-28	-29.5%	76	1	1.3%	76	-10	-11.6%
Theft of Motor Vehicle	13	-6	-31.6%	9	1	12.5%	7	-4	-36.4%
Violent Crime	120	-6	-4.8%	30	-20	-40.0%	84	-31	-27.0%
Recorded Crime Total	976	35	3.7%	495	-104	-17.4%	739	-204	-21.6%

19.3 The below statistics show anti-social behaviour calls recorded by West Yorkshire Police from 1st April 2012 until March 31st 2013 by area committee and further broken down into ward areas .The Outer North East area has seen an overall reduction of 29.4% (400 less incidents reported).

OUTER NORTH EAST			WETHERBY			HAREWOOD			ALWOODLEY		
Incidents	Change	% Change	Incidents	Change	% Change	Incidents	Change	% Change	Incidents	Change	% Change
961	- 400	29.4%	376	-140	-27.1%	167	-118	-41.4%	418	-142	-25.4%

20. Public Confidence and User Satisfaction in the Police (Roundhay, Moortown and Alwoodley)

Public Confidence	March 2012	March 2013	
Confidence in local policing	70.3%	66.2%	-4.1%
Overall Satisfaction	88.0%	83.2%	-4.8%
Perceptions of ASB increasing	7.3%	4.0%	-3.3%

21. Public Confidence and User Satisfaction in the Police Wetherby /Harewood)

Public Confidence	March 2012	March 2013	
Confidence in local policing	75.0%	74.1%	-0.9%
Overall Satisfaction	85.1%	87.3%	+2.2%
% of residents who think ASB has increased	7.9%	6.1%	-1.8%

22. Corporate Consideration

23. Consultation and Engagement

23.1 The North East Divisional Safety partnership works in partnership with the voluntary and community sector and when necessary carries out statutory consultation as appropriate.

24. Equality and Diversity / Cohesion and Integration

24.1 Consideration is given to the equality impact of delivering the Safer Leeds strategy across North East Police Division. Where a negative equality impact is identified action will be taken to mitigate the impact or risk.

25. Council Policies and City Priorities

25.1 The North East Divisional community safety partnership delivers directly against the Safer and Stronger Communities Board Partnership plan 2011-2015.

26. Resource and Value for Money

26.1 The work undertaken by the DCSP is underpinned by maximisation of resources through effective partnership work.

27. Legal Implications, Access to Information and Call In

27.1 There are no exempt or confidential information contained in this report

27.2 There are no legal implications associated with this report

27.3 There are no key decisions associated with this report, so it is not subject to call in

28. Risk Management

28.1 There are no major risks associated with the content of this report

29. Conclusions

29.1 Overall a very successful year for North East in relation to overall crime reduction, public confidence and increased performance and perceptions in dealing with anti-social behaviour. The DCSP will continue to prioritise burglary dwelling during 2013/14 to ensure reductions are sustained and further improvements are made.

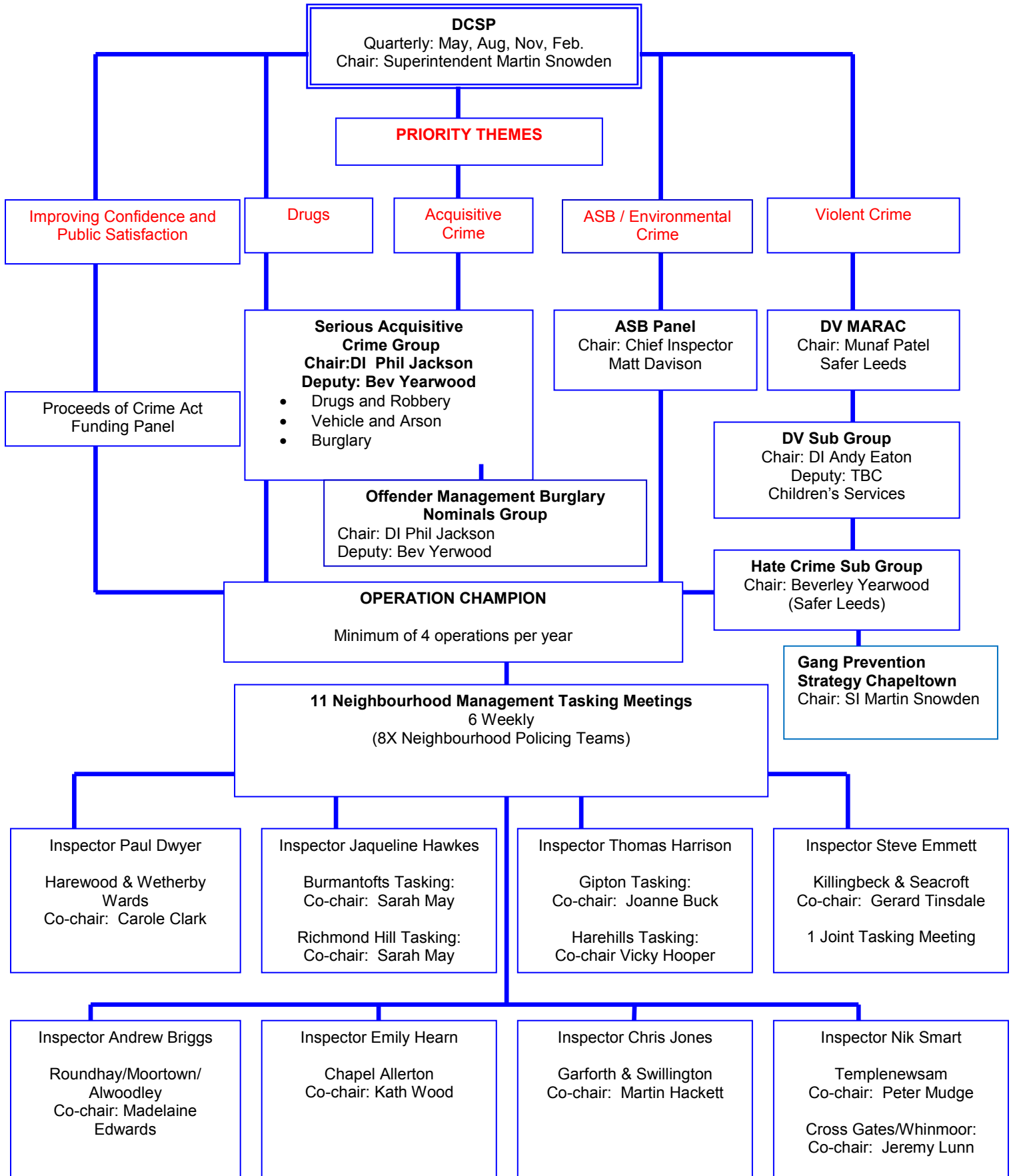
30. Recommendations

30.1 Members are asked to continue supporting the Divisional Community Safety Partnership in relation to prioritising and tackling Burglary Dwelling during 2013/14 through partnership work at neighbourhood level.

31. Background Documents

32. Safer Leeds OBA Burglary Year End Report

North East Division
Divisional Community Safety Partnership



Harewood ,Wetherby , Alwoodley				
POCA Ref	Date	Brief Description	Organisation	Amount Paid
443	03/04/2012	Community Fun Day - outdoor games, bouncy castle for a community fun day	Bardsey Sports Club	£250
445	03/04/2012	Fieldcraft Training Equipment - equipment for Fieldcraft, Basha Bivouac shelters 5 x £150, paracord rope and bungees £30, Basha Poles 5 x £12, pegs and sundries £10	Royal Air Force Air Cadets	£250
447	05/04/2012	Chrestnut Grove Estate Street Party - 2nd June 2012 - Diamond Jubilee Street Party. Fancy dress parade, party games, entertainer, music.	Chestnut Grove Estate	£250
472	08/05/2012	Thorner Historical Society Archive - to purchase software for the societys PC to ensure that artefacts can be recorded and stored for future reference.The society is keen to ensure we record memories and artefacts of people whose parents were affected by WW1.	Richard Gibson	250
442	03/04/2012	Queends Diamond Jubilee Event in Thorp Arch - artists and entertainers. A magician, childrens entertainer and a morris group.	Thorp Arch Jubilee Group	£250
452	13/04/2012	Scholes in Bloom Hanging Baskets - to purchase plants to fill 110 new hanging baskets, to be planted towards end of April.	Scholes in Bloom - Ben Hogan	£250
501	11/07/2012	Bandstand - To provide a musical/theatrical bandstand to the playground area of Barwick in Elmet C of E Primary School. This Bandstand will also provide a shelter from the sun/rain & have a multitude of uses. It will encourage the children to be creative & gain confidence through performance. to be completed by Jan 2013.	Friends of Barwick School	£250
505	23/07/2012	Little Red - You Know Who - This project includes bringing the professional Freehand Puppetry Theatre to Barwick in Elmet for a performance of 'Little Red - You Know Who', engaging a family audience of 100. Prior to the event, chilren and their families can 'spot the wolf' in a number of cultural activities around the village and also partake in arts competitions. On the day, families are invited to stay after the performance and crafts activities will be offered to the childrenm, while parents can enjoy refreshments and meet other parents from the village.	Art for Barwick Children	£250
512	09/08/2012	Studio Mixer - A 'Not for Profit' local community radio station, run entirely by volunteers for the benefit of the community. Wish to replace the current studio mixer so that it can be used as a training facility in the new studio.	Wetherby Community radio	£250
519	19/09/2012	Receipt Books for Euro Lock - Working with Inspector Dwyer and Wetherby NP Teams Wetherby Crime Panel will be supplying replacement UPVC door locks to up to date standard of TS007 3* to residents at a cost of £37:50p. Receipts are required for 10 year guarantee. See sample 2 sided receipt.	Wetherby and District Crime Prevention Panel	£210
509	30/07/2012	Garden Project - The development of an allotment area/raised bads.	Aberford C of E Primary School	£250

555	18/02/2013	Junior Cricket Net - Additional batting net for junior section of the club. We currently have 114 juniors registered at the club and additional net is needed for training nights. The number of juniors has increased in last few years due greater efforts by the club to attract juniors to the club from local community. This helps to develop the community and improve sporting opportunities for local children.	Collingham Cricket Club	250
564	18/02/2013	Display Equipment for teaching - The squadron is growing and now running four classes. We need display equipment in order to show excellent teaching material in electronic form which includes animations and video. We would like to purchase a display screen for our small classroom.	Wetherby Air Cadets	£250
573	25/02/2013	Welcome to Wetherby Information Leaflets - Create and produce a Welcome to Wetherby Leaflet which will provide a guide for visitors as to what to see and where to go in Wetherby.	Wetherby Town Council	£250
434	15/03/2012	Football kit - Wigton Moor U16's need football kit, and training kit for 15 players	Wigton Moor U 16 Girls Football	£250
506	26/07/2012	Wigton Moor Junior AFC U15's Boys Football Team - Boys U15's football team which comprises of boys from Alwoodley, Meanwood, Moortown & Roundhay.	Wigton Moor Junior AFC	£250
528	26/09/2012	Alwoodley Community Orchestra - a diverse community group of people that meet every Sunday morning at Alwoodley Community Centre to play classical music. We provide 2 concerts a year to audiences in the Alwoodley Community Centre	Alwoodley Community Centre	£250
542	25/10/2012	Wigton Moor Under 8's - To buy a new football kit for the under 8's football team.	Wigton Moor Sports Association	£300
569	25/02/2013	Alwoodley Junior Football Club Portable Goals - Portable goals to save transporting heavy ones and then assembling them. This would make a massive difference to our club.	Alwoodley Junior Football Club	£250

